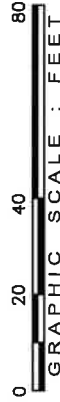


SCALE: 1" = 40'



NOTE: Bearings shown hereon are based on the Texas Coordinate System of 1983 - Central Zone. Distances shown are surface horizontal.

**LEGEND:**

- Found 5/8" Iron Pipe or Rod
- Set 1/2" Iron Rod with Cap marked "SKG Engineers"

DEPARTMENT OF PLANNING  
Approved for recording this 18 day of November, 2024

By: Director of Planning

DEPARTMENT OF WATER UTILITIES  
Approved for recording this 4 day of December, 2024

By: Director of Water Utilities

DEPARTMENT OF PUBLIC WORKS  
Approved for recording this 4 day of December, 2024

By: Director of Public Works

COUNTY CLERK  
Filed for record this 5 day of December, 2024 @ 1:39  
County Clerk of Tom Green Co., Tx.

By: Deputy Clerk

STATE OF TEXAS  
COUNTY OF TOM GREEN  
This instrument was acknowledged before me on November 26 24 by Eric Von Rosenberg in the capacity shown.

By: Notary Public, State of Texas

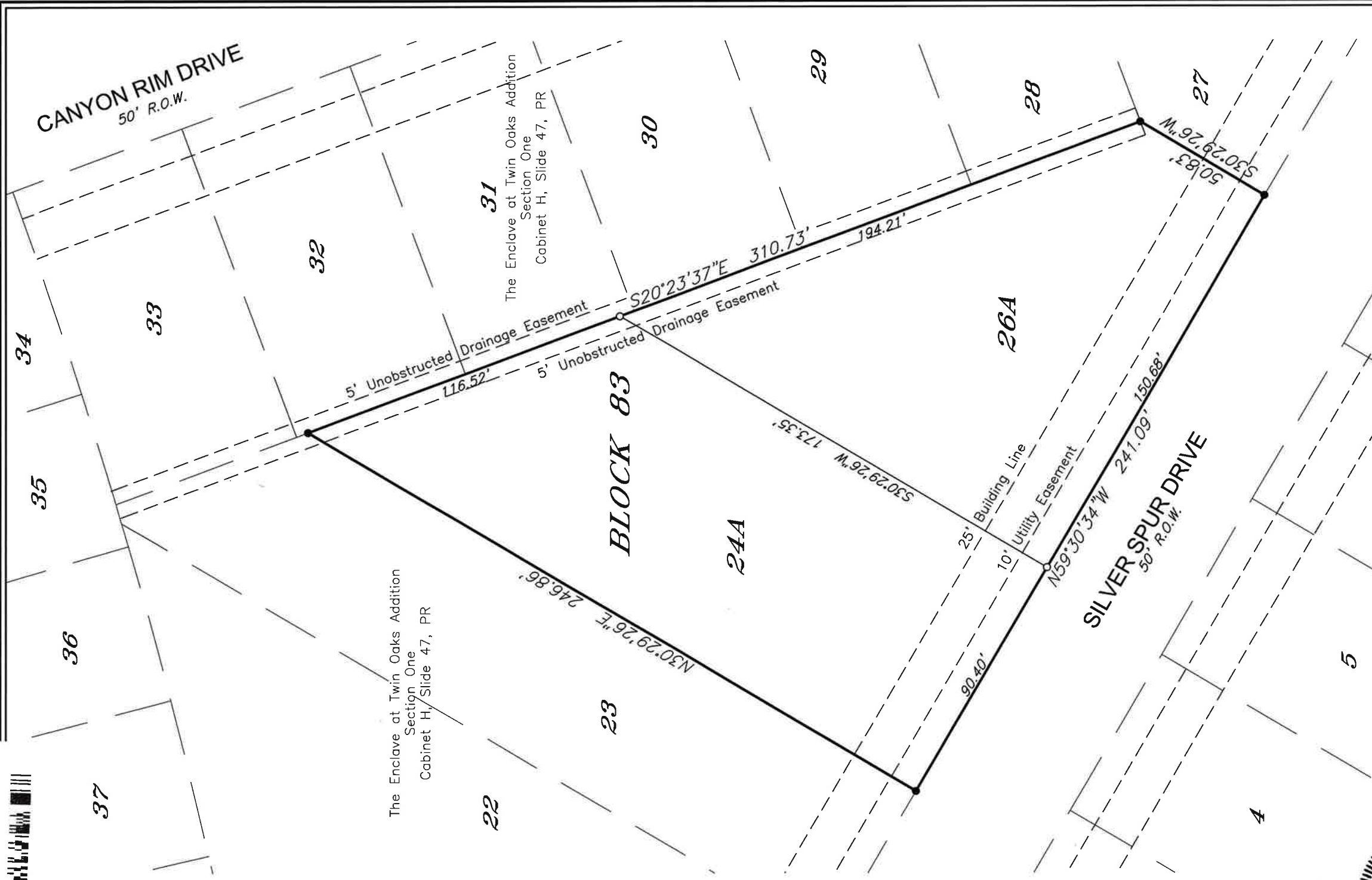


This Plat is Filed in Cabinet H, Slide 120  
Plat Records of Tom Green County, Texas.

Fire hydrants and fire department access may need to be provided, depending upon the proposed layout of the buildings, and should be addressed as part of the site plan review process.

**SKG ENGINEERING, LLC**  
SURVEYING • ENVIRONMENTAL • LAB/CMT

706 SOUTH ABE STREET  
SAN ANGELO, TEXAS 76903  
PHONE: 325.655.1288  
FAX: 325.657.8189  
Firm No. 10102400  
www.skge.com



**FIRST REPLAT OF  
LOTS 24, 25, AND 26, BLOCK 83  
THE ENCLAVE AT TWIN OAKS ADDITION  
SECTION ONE**

City of San Angelo, Tom Green County, Texas.

OWNER/DEVELOPER: West Texas Land Guys San Angelo, LLC

DESCRIPTION: Being 0.824 acre of land and being all of Lots 24, 25, and 26, Block 83, The Enclave at Twin Oaks Addition Section One according to the plat recorded in Cabinet H, Slide 47, Plat Records of Tom Green County, Texas.

ACKNOWLEDGEMENT/DEDICATION  
We, West Texas Land Guys San Angelo, LLC, do hereby adopt this plat as the subdivision of our property and dedicate for the use of the public the easements shown hereon.

Eric Von Rosenberg  
Manager



**SURVEYOR'S CERTIFICATE**  
Know all men by these presents: that I, Russell T. Gully RPLS, do hereby certify that I prepared this plat from an actual and accurate survey of the land and that corner monuments shown hereon were properly placed, under my supervision, in accordance with the rules for land subdivision by the City Council of the City of San Angelo; and I further certify that the tract of land herein platted lies within the city limits of the City of San Angelo, Texas.