

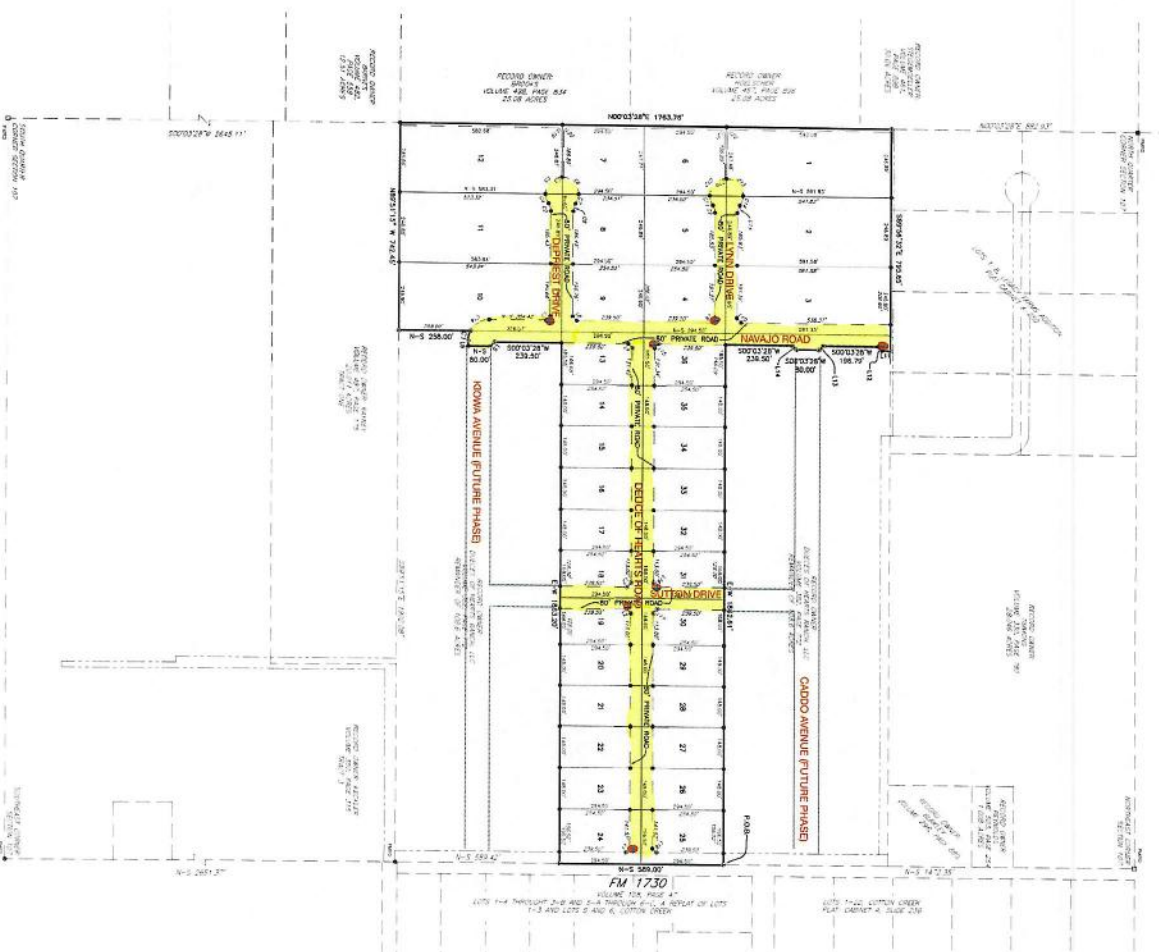
Plan No. 17-1382
 General Notes
 1. All lots shown on this plan are subject to the same conditions and restrictions as those shown on the original plat for the same tract.
 2. The survey was made by the undersigned and is based on the best available information.
 3. The survey was made on or about the date shown on the original plat for the same tract.
 4. The survey was made by the undersigned and is based on the best available information.
 5. The survey was made on or about the date shown on the original plat for the same tract.
 6. The survey was made by the undersigned and is based on the best available information.
 7. The survey was made on or about the date shown on the original plat for the same tract.
 8. The survey was made by the undersigned and is based on the best available information.
 9. The survey was made on or about the date shown on the original plat for the same tract.
 10. The survey was made by the undersigned and is based on the best available information.

11. The survey was made on or about the date shown on the original plat for the same tract.
 12. The survey was made by the undersigned and is based on the best available information.
 13. The survey was made on or about the date shown on the original plat for the same tract.
 14. The survey was made by the undersigned and is based on the best available information.
 15. The survey was made on or about the date shown on the original plat for the same tract.
 16. The survey was made by the undersigned and is based on the best available information.
 17. The survey was made on or about the date shown on the original plat for the same tract.
 18. The survey was made by the undersigned and is based on the best available information.
 19. The survey was made on or about the date shown on the original plat for the same tract.
 20. The survey was made by the undersigned and is based on the best available information.

21. The survey was made on or about the date shown on the original plat for the same tract.
 22. The survey was made by the undersigned and is based on the best available information.
 23. The survey was made on or about the date shown on the original plat for the same tract.
 24. The survey was made by the undersigned and is based on the best available information.
 25. The survey was made on or about the date shown on the original plat for the same tract.
 26. The survey was made by the undersigned and is based on the best available information.
 27. The survey was made on or about the date shown on the original plat for the same tract.
 28. The survey was made by the undersigned and is based on the best available information.
 29. The survey was made on or about the date shown on the original plat for the same tract.
 30. The survey was made by the undersigned and is based on the best available information.

31. The survey was made on or about the date shown on the original plat for the same tract.
 32. The survey was made by the undersigned and is based on the best available information.
 33. The survey was made on or about the date shown on the original plat for the same tract.
 34. The survey was made by the undersigned and is based on the best available information.
 35. The survey was made on or about the date shown on the original plat for the same tract.
 36. The survey was made by the undersigned and is based on the best available information.
 37. The survey was made on or about the date shown on the original plat for the same tract.
 38. The survey was made by the undersigned and is based on the best available information.
 39. The survey was made on or about the date shown on the original plat for the same tract.
 40. The survey was made by the undersigned and is based on the best available information.

41. The survey was made on or about the date shown on the original plat for the same tract.
 42. The survey was made by the undersigned and is based on the best available information.
 43. The survey was made on or about the date shown on the original plat for the same tract.
 44. The survey was made by the undersigned and is based on the best available information.
 45. The survey was made on or about the date shown on the original plat for the same tract.
 46. The survey was made by the undersigned and is based on the best available information.
 47. The survey was made on or about the date shown on the original plat for the same tract.
 48. The survey was made by the undersigned and is based on the best available information.
 49. The survey was made on or about the date shown on the original plat for the same tract.
 50. The survey was made by the undersigned and is based on the best available information.



DEUCE OF HEARTS SUBDIVISION,
 A Subdivision located in Section 107, Certificate 34, Abstract 280,
 Georgetown Railway Company Survey, Lynn County, Texas

REQUIREMENTS THIS DOCUMENT SHALL NOT BE RECORDED FOR ANY PURPOSE. THIS DOCUMENT IS RETURNED TO THE SUBMITTER WITHOUT RECORD DATE 08/08/2023.

SUBMITTER: DELTA LAND SURVEYING, LLC
CONTACT: JAMES DAVIS@DELTA-SURV.COM
PHONE: 800-431-5209

LINE TABLE

LINE NO.	BEARING	LENGTH	START POINT	END POINT
1	N 45° 00' 00" W	11.21	1	2
2	N 89° 59' 59" E	11.21	2	3
3	S 45° 00' 00" E	11.21	3	4
4	S 89° 59' 59" W	11.21	4	5
5	N 45° 00' 00" W	11.21	5	6
6	N 89° 59' 59" E	11.21	6	7
7	S 45° 00' 00" E	11.21	7	8
8	S 89° 59' 59" W	11.21	8	9
9	N 45° 00' 00" W	11.21	9	10
10	N 89° 59' 59" E	11.21	10	11
11	S 45° 00' 00" E	11.21	11	12
12	S 89° 59' 59" W	11.21	12	13
13	N 45° 00' 00" W	11.21	13	14
14	N 89° 59' 59" E	11.21	14	15
15	S 45° 00' 00" E	11.21	15	16
16	S 89° 59' 59" W	11.21	16	17
17	N 45° 00' 00" W	11.21	17	18
18	N 89° 59' 59" E	11.21	18	19
19	S 45° 00' 00" E	11.21	19	20
20	S 89° 59' 59" W	11.21	20	21
21	N 45° 00' 00" W	11.21	21	22
22	N 89° 59' 59" E	11.21	22	23
23	S 45° 00' 00" E	11.21	23	24
24	S 89° 59' 59" W	11.21	24	25
25	N 45° 00' 00" W	11.21	25	26
26	N 89° 59' 59" E	11.21	26	27
27	S 45° 00' 00" E	11.21	27	28
28	S 89° 59' 59" W	11.21	28	29
29	N 45° 00' 00" W	11.21	29	30
30	N 89° 59' 59" E	11.21	30	31
31	S 45° 00' 00" E	11.21	31	32
32	S 89° 59' 59" W	11.21	32	33
33	N 45° 00' 00" W	11.21	33	34

FLAT LIMITS CURVE TABLE

LINE NO.	ARC LENGTH	CHORD BEARING	CHORD DISTANCE
1	15.000'	S 45° 00' 00" W	10.607'
2	15.000'	S 89° 59' 59" W	10.607'
3	15.000'	N 45° 00' 00" W	10.607'
4	15.000'	N 89° 59' 59" E	10.607'
5	15.000'	S 45° 00' 00" E	10.607'
6	15.000'	S 89° 59' 59" E	10.607'
7	15.000'	N 45° 00' 00" E	10.607'
8	15.000'	N 89° 59' 59" W	10.607'
9	15.000'	S 45° 00' 00" W	10.607'
10	15.000'	S 89° 59' 59" W	10.607'
11	15.000'	N 45° 00' 00" W	10.607'
12	15.000'	N 89° 59' 59" E	10.607'
13	15.000'	S 45° 00' 00" E	10.607'
14	15.000'	S 89° 59' 59" E	10.607'
15	15.000'	N 45° 00' 00" E	10.607'
16	15.000'	N 89° 59' 59" W	10.607'
17	15.000'	S 45° 00' 00" W	10.607'
18	15.000'	S 89° 59' 59" W	10.607'
19	15.000'	N 45° 00' 00" W	10.607'
20	15.000'	N 89° 59' 59" E	10.607'
21	15.000'	S 45° 00' 00" E	10.607'
22	15.000'	S 89° 59' 59" E	10.607'
23	15.000'	N 45° 00' 00" E	10.607'
24	15.000'	N 89° 59' 59" W	10.607'
25	15.000'	S 45° 00' 00" W	10.607'
26	15.000'	S 89° 59' 59" W	10.607'
27	15.000'	N 45° 00' 00" W	10.607'
28	15.000'	N 89° 59' 59" E	10.607'
29	15.000'	S 45° 00' 00" E	10.607'
30	15.000'	S 89° 59' 59" E	10.607'
31	15.000'	N 45° 00' 00" E	10.607'
32	15.000'	N 89° 59' 59" W	10.607'
33	15.000'	S 45° 00' 00" W	10.607'
34	15.000'	S 89° 59' 59" W	10.607'

REFERENCE LOT CURVE TABLE

LOT NO.	ARC LENGTH	CHORD BEARING	CHORD DISTANCE
1	15.000'	S 45° 00' 00" W	10.607'
2	15.000'	S 89° 59' 59" W	10.607'
3	15.000'	N 45° 00' 00" W	10.607'
4	15.000'	N 89° 59' 59" E	10.607'
5	15.000'	S 45° 00' 00" E	10.607'
6	15.000'	S 89° 59' 59" E	10.607'
7	15.000'	N 45° 00' 00" E	10.607'
8	15.000'	N 89° 59' 59" W	10.607'
9	15.000'	S 45° 00' 00" W	10.607'
10	15.000'	S 89° 59' 59" W	10.607'
11	15.000'	N 45° 00' 00" W	10.607'
12	15.000'	N 89° 59' 59" E	10.607'
13	15.000'	S 45° 00' 00" E	10.607'
14	15.000'	S 89° 59' 59" E	10.607'
15	15.000'	N 45° 00' 00" E	10.607'
16	15.000'	N 89° 59' 59" W	10.607'
17	15.000'	S 45° 00' 00" W	10.607'
18	15.000'	S 89° 59' 59" W	10.607'
19	15.000'	N 45° 00' 00" W	10.607'
20	15.000'	N 89° 59' 59" E	10.607'
21	15.000'	S 45° 00' 00" E	10.607'
22	15.000'	S 89° 59' 59" E	10.607'
23	15.000'	N 45° 00' 00" E	10.607'
24	15.000'	N 89° 59' 59" W	10.607'
25	15.000'	S 45° 00' 00" W	10.607'
26	15.000'	S 89° 59' 59" W	10.607'
27	15.000'	N 45° 00' 00" W	10.607'
28	15.000'	N 89° 59' 59" E	10.607'
29	15.000'	S 45° 00' 00" E	10.607'
30	15.000'	S 89° 59' 59" E	10.607'
31	15.000'	N 45° 00' 00" E	10.607'
32	15.000'	N 89° 59' 59" W	10.607'
33	15.000'	S 45° 00' 00" W	10.607'
34	15.000'	S 89° 59' 59" W	10.607'

DELTA LAND SURVEYING, LLC
 2000 W. 12TH STREET
 LUBBOCK, TX 79424
 WWW.DELTA-SURV.COM
 800-431-5209