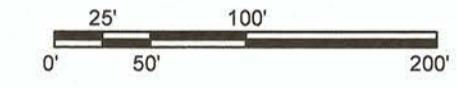
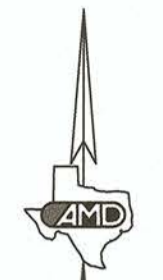


THE OVERLOOK, LOTS 1 THROUGH 122, AN ADDITION TO THE CITY OF WOLFORTH, LUBBOCK COUNTY, TEXAS



VICINITY MAP NOT TO SCALE

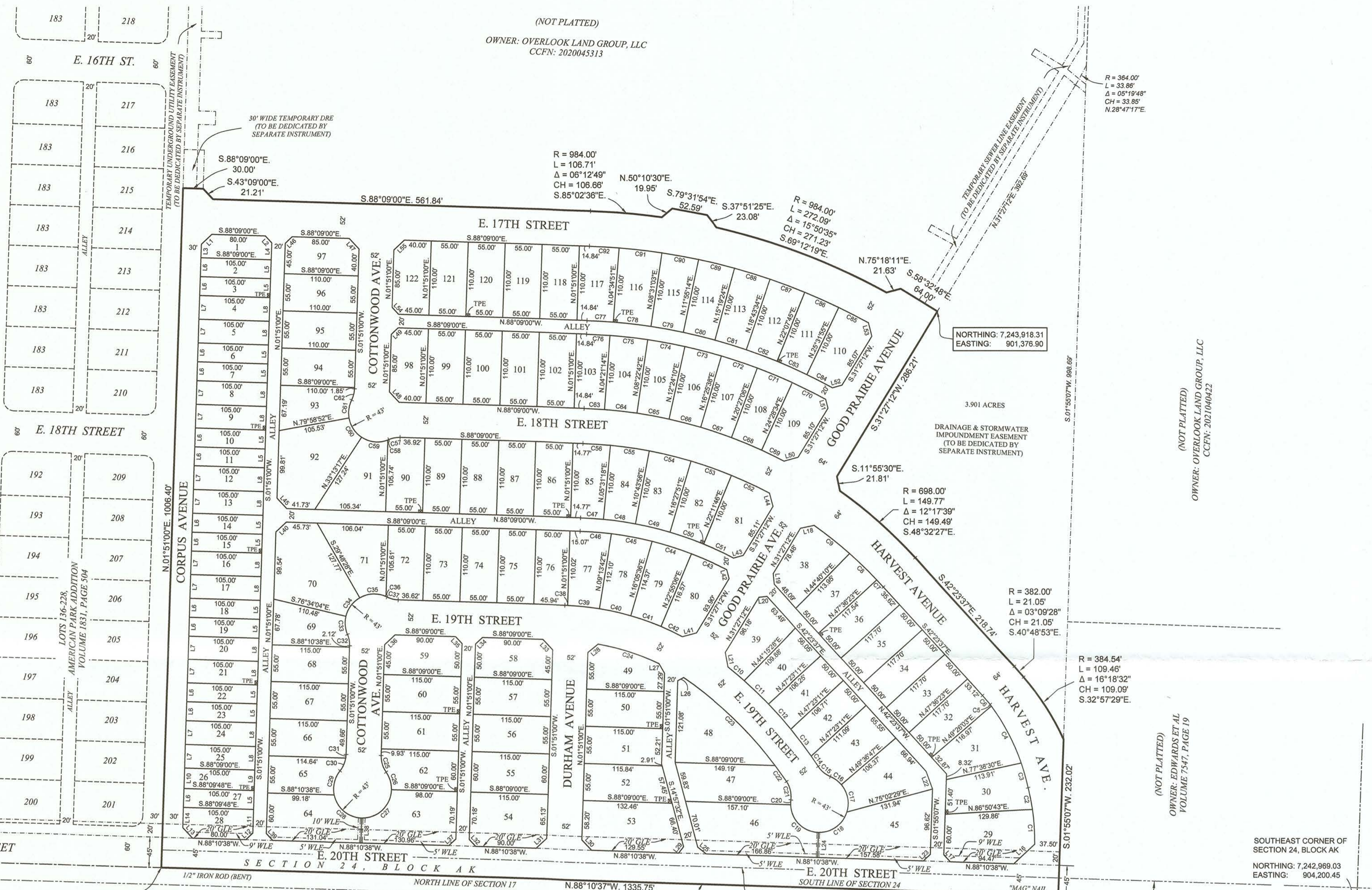


Table with columns: LINE, BEARING, DISTANCE. Lists survey points and bearings for the plat.

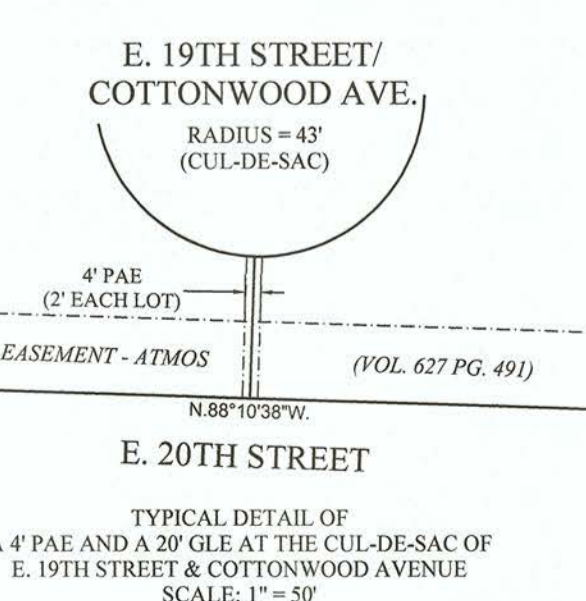
NORTHING: 7,243,095.64 EASTING: 900,222.12 THE SOUTHWEST CORNER OF SECTION 24, BLOCK A, BEARS N.88°10'37\"/>

Table with columns: CURVE, RADIUS, ARC LENGTH, DELTA ANGLE, CHORD LENGTH, CHORD BEARING. Lists curve data for the plat.

Table with columns: CURVE, RADIUS, ARC LENGTH, DELTA ANGLE, CHORD LENGTH, CHORD BEARING. Lists curve data for the plat.

Table with columns: CURVE, RADIUS, ARC LENGTH, DELTA ANGLE, CHORD LENGTH, CHORD BEARING. Lists curve data for the plat.

Table with columns: CURVE, RADIUS, ARC LENGTH, DELTA ANGLE, CHORD LENGTH, CHORD BEARING. Lists curve data for the plat.



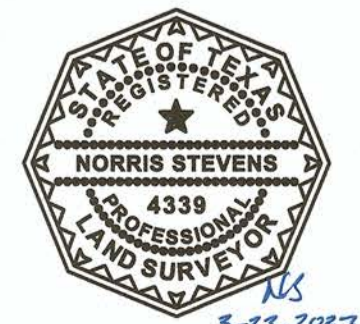
NOTES: SCALE: 1" = 100'. 1. HEAVY LINES INDICATE PLAT LIMITS. 2. ALL STREETS, ALLEYS, AND EASEMENTS WITHIN PLAT LIMITS ARE HEREIN DEDICATED, UNLESS NOTED OTHERWISE. 3. NO BUILDING PERMIT SHALL BE ISSUED ON ANY SURVEY CERTIFICATE THAT IS NOT IN ACCORDANCE WITH AN APPROVED FINAL PLAT UNLESS AN EXCEPTION IS PROVIDED BY THE CITY COUNCIL POLICY OR BY THE CITY OF WOLFORTH CODE OF ORDINANCES. 4. ALL UTILITY SERVICE SHALL BE IN ACCORDANCE WITH THE "UNDERGROUND UTILITIES POLICY" STATEMENT BY THE CITY COUNCIL OF THE CITY OF WOLFORTH, TEXAS AND THE PROVISIONS OF SECTION 15.08.095 OF THE CITY OF WOLFORTH CODE OF ORDINANCES. 5. ANY RELOCATION OR REVISION OF EXISTING FACILITIES SHALL BE THE SUBDIVIDER'S EXPENSE. COMPENSATION SHALL BE MADE PRIOR TO RECORDING OF THIS FINAL PLAT. 6. ALL EXISTING OR PROPOSED UTILITY SERVICES TO AND ON TRACTS INDICATED BY THIS PLAT SHALL BE CONTAINED IN THE PUBLIC RIGHT-OF-WAY AND PUBLIC OR PRIVATE UTILITY EASEMENTS. UTILITY SERVICE INSTALLATION REQUESTED AT A FUTURE DATE AND NOT WITHIN AN EASEMENT INDICATED BY THIS PLAT, SHALL BE WITHIN A PROPER UTILITY EASEMENT GRANTED BY THE OWNER OF SAID PROPERTY BY SEPARATE RECORDED INSTRUMENT PRIOR TO THE PROVISION OF SUCH SERVICE. SUCH EASEMENTS SHALL BE AT THE EXPENSE OF THE ENTITY REQUESTING SUCH INSTALLATION. 7. ALL EASEMENTS HEREIN GRANTED SHALL ENTITLE THE CITY OR THE UTILITY COMPANY USING SUCH EASEMENTS TO THE RIGHT TO REMOVE, REPAIR OR REPLACE ANY LINES, PIPES, CONDUITS, OR POLES WITHIN SUCH EASEMENTS AS MAY BE DETERMINED BY THE CITY OR UTILITY COMPANY WITHOUT THE CITY OR UTILITY COMPANY BEING RESPONSIBLE OR LIABLE FOR THE REPLACEMENT OF IMPROVEMENTS, PAVING OR SURFACING OF THE EASEMENT NECESSITATED BY SUCH REPAIR, REMOVAL OR REPLACEMENT. EASEMENTS DESIGNATED OR INTENDED FOR VEHICULAR PASSAGE UTILITY AND EMERGENCY OR PEDESTRIAN ACCESS SHALL NOT BE FENCED OR OTHERWISE OBSTRUCTED. 8. ANY EASEMENTS OR RIGHTS-OF-WAY SHOWN AS TO BE DEDICATED BY SEPARATE INSTRUMENT ARE SHOWN ON THE PLAT FOR INFORMATION PURPOSES ONLY. THIS PLAT DOES NOT DEDICATE SAID EASEMENTS. 9. MINIMUM FLOOR ELEVATIONS SHALL CONFORM TO THE REQUIREMENTS OF THE CITY DRAINAGE DESIGN MANUAL AND SECTION 3.09.020 OF THE CITY OF WOLFORTH CODE OF ORDINANCES. 10. IN ORDER TO PREVENT DAMAGE TO PUBLIC AND PRIVATE UTILITIES AND TO MINIMIZE AND OR ELIMINATE INTERRUPTION OF UTILITY SERVICES, THE CITY OF WOLFORTH REQUESTS THAT NO UTILITY RISERS, METER BASES, PEDESTALS, ETC., PUBLIC OR PRIVATE, BE PLACED IN THE CHAMFERED CORNERS OF ALLEYWAYS. AEE = ATMOS ENERGY EASEMENT. NO FENCES SHALL BE BUILT ACROSS THIS EASEMENT AND NO TREES SHALL BE PLANTED WITHIN THIS EASEMENT. DRE = DRAINAGE EASEMENT. WLE = WATERLINE EASEMENT (CITY OF WOLFORTH WATER LINE EASEMENT FOR SINGLE WATER LINE). CM = CONTROL MONUMENT. PMRD = PHYSICAL MONUMENT OF RECORD DIGNITY. CCFN = COUNTY CLERK'S FILE NUMBER. P&D = PLAT AND DEDICATION NUMBER. BEARINGS AND COORDINATES SHOWN HEREON ARE RELATIVE TO THE TEXAS COORDINATE SYSTEM OF 1983 (2011), TEXAS NORTH CENTRAL ZONE, THE CONVERGENCE ANGLE TO TRUE NORTH BEARINGS IS -01° 54' 48.24" AND THE COMBINED SCALE FACTOR IS 0.99974921. DISTANCES SHOWN HEREON ARE AT SURFACE, IN U.S. SURVEY FEET. THESE PLAT LIMITS CONTAIN 26,241 ACRES. DESCRIPTION OF THESE PLAT LIMITS ARE ON A SEPARATE DOCUMENT, OF SAME DATE HERewith.

APPROVED THIS 4th DAY OF April, 2022, BY THE CITY COUNCIL OF THE CITY OF WOLFORTH, TEXAS.

MAYOR: [Signature] CITY SECRETARY: [Signature]

KNOW ALL MEN BY THESE PRESENTS: THAT I, NORRIS STEVENS, REGISTERED PROFESSIONAL LAND SURVEYOR, DO HEREBY CERTIFY THAT I PREPARED THIS PLAT FROM AN ACTUAL AND ACCURATE SURVEY OF THE LAND AND THAT THE CORNER MONUMENTS AND/OR OTHER CONTROL SHOWN THEREON WERE PROPERLY PLACED UNDER MY PERSONAL SUPERVISION, IN ACCORDANCE WITH THE SUBDIVISION REGULATIONS OF THE CITY OF WOLFORTH, TEXAS.

REGISTERED PROFESSIONAL LAND SURVEYOR # 4339 LUBBOCK, TEXAS



AMD Engineering, LLC 6515 68th Street, Suite 300 Lubbock, TX 79424. Phone: 806-771-5976 Fax: 806-771-7625 TBPELS Reg. # 10176500. CIVIL ENGINEERING LAND SURVEYING Accuracy - Efficiency - Integrity