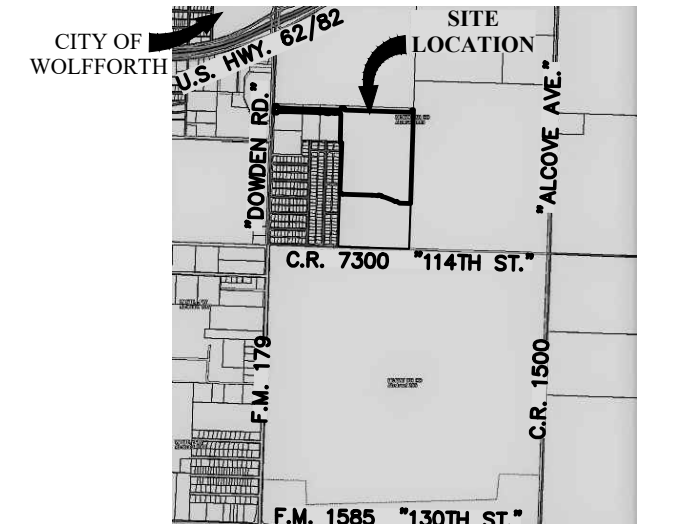


THE OVERLOOK,

LOTS 123 THROUGH 390,
AN ADDITION TO THE CITY OF WOLFORTH,
LUBBOCK COUNTY, TEXAS



VICINITY MAP
NOT TO SCALE

- NOTES:
SCALE 1" = 100'.
1. HEAVY LINES INDICATE PLAT LIMITS.
2. ALL STREETS, ALLEYS, AND EASEMENTS WITHIN PLAT LIMITS ARE HEREIN DEDICATED, UNLESS NOTED OTHERWISE.
3. NO BUILDING PERMIT SHALL BE ISSUED ON ANY SURVEY CERTIFICATE THAT IS NOT IN ACCORDANCE WITH THIS FINAL PLAT.
4. ANY RELOCATION OR REVISION OF EXISTING FACILITIES SHALL BE THE SUBDIVIDER'S EXPENSE. COMPENSATION SHALL BE MADE PRIOR TO RECORDING OF THIS FINAL PLAT.
5. ALL EXISTING OR PROPOSED UTILITY SERVICES TO AND ON TRACTS INDICATED BY THIS PLAT SHALL BE CONTAINED IN THE PUBLIC RIGHT-OF-WAY AND PUBLIC OR PRIVATE UTILITY EASEMENTS. UTILITY SERVICE INSTALLATION REQUESTED AT A FUTURE DATE AND NOT WITHIN AN EASEMENT INDICATED BY THIS PLAT, SHALL BE WITHIN A PROPER UTILITY EASEMENT GRANTED BY THE OWNER OF SAID PROPERTY BY SEPARATE RECORDED INSTRUMENT PRIOR TO THE PROVISION OF SUCH SERVICE. SUCH EASEMENTS SHALL BE AT THE EXPENSE OF THE ENTITY REQUESTING SUCH INSTALLATION.
6. ALL EASEMENTS HEREIN GRANTED SHALL ENTITLE THE CITY OR THE UTILITY COMPANY USING SUCH EASEMENTS TO THE RIGHT TO REMOVE, REPAIR OR REPLACE ANY LINES, PIPES, CONDUITS, OR POLES WITHIN SUCH EASEMENTS AS MAY BE DETERMINED BY THE CITY OR UTILITY COMPANY WITHOUT THE CITY OR UTILITY COMPANY BEING RESPONSIBLE OR LIABLE FOR THE REPLACEMENT OF IMPROVEMENTS, PAVING OR SURFACING OF THE EASEMENT NECESSITATED BY SUCH SURVEY, REMOVAL, OR REPLACEMENT. EASEMENTS DESIGNATED OR INTENDED FOR VEHICULAR PASSAGE (UTILITY AND EMERGENCY) OR PEDESTRIAN ACCESS SHALL NOT BE FENCED OR OTHERWISE OBSTRUCTED.
7. ANY EASEMENTS OR RIGHTS-OF-WAY SHOWN AS TO BE DEDICATED BY SEPARATE INSTRUMENT ARE SHOWN ON THE PLAT FOR INFORMATION PURPOSES ONLY. THIS PLAT DOES NOT DEDICATE SAID EASEMENTS.
8. IN ORDER TO PREVENT DAMAGE TO PUBLIC AND PRIVATE UTILITIES AND TO MINIMIZE AND OR ELIMINATE INTERFERENCE TO UTILITY SERVICES, THE CITY OF WOLFORTH REQUESTS THAT NO UTILITY RISERS, METER BASES, PEDESTALS, ETC., PUBLIC OR PRIVATE, BE PLACED IN THE CHAMFERED CORNERS OF ALLEYWAYS.
DRE = DRAINAGE EASEMENT.
R-O-W = RIGHT-OF-WAY.
SPEC = SOUTH PLAINS ELECTRIC COOPERATIVE.
SLE = SEWER LINE EASEMENT.
TPE = 4"X6" (MINIMUM) TRANSFORMER PAD EASEMENT (HEREIN GRANTED TO SPEC).
LUE = UNDERGROUND UTILITY EASEMENT.
CM = CONTROL MONUMENT.
PMRD = PHYSICAL MONUMENT OF RECORD DIGNITY.
CFN = COUNTY CLERK'S FILE NUMBER.
P&D = PLAT AND DEDICATION NUMBER.
BEARINGS ARE RELATIVE TO THE TEXAS COORDINATE SYSTEM OF 1983 (2011), TEXAS NORTH CENTRAL ZONE. THE CONVERGENCE ANGLE TO TRUE NORTH BEARINGS IS -01° 54' 46". THE COMBINED SCALE FACTOR IS 0.99974921.
COORDINATES SHOWN HEREON ARE BASED ON THE TEXAS COORDINATE SYSTEM OF 1983 (2011), TEXAS NORTH CENTRAL ZONE.
DISTANCES SHOWN HEREON ARE AT SURFACE, IN U.S. SURVEY FEET.
THESE PLAT LIMITS CONTAIN 52,607 ACRES.
DESCRIPTION OF THESE PLAT LIMITS ARE ON A SEPARATE DOCUMENT, OF SAME DATE HEREWITH.

A PORTION OF THIS SURVEYED PROPERTY LIES WITHIN THE LIMITS OF A "SPECIAL FLOOD HAZARD AREA" THE BOUNDARIES OF THESE AREAS ARE ESTABLISHED BY THE FEDERAL EMERGENCY MANAGEMENT AGENCY. NOT THIS SURVEYOR. FEMA FLOOD HAZARD MAPS ARE ON FILE IN THE BUILDING INSPECTION OFFICE, CITY HALL, WOLFORTH, TEXAS AND ARE OPEN FOR PUBLIC INSPECTION.

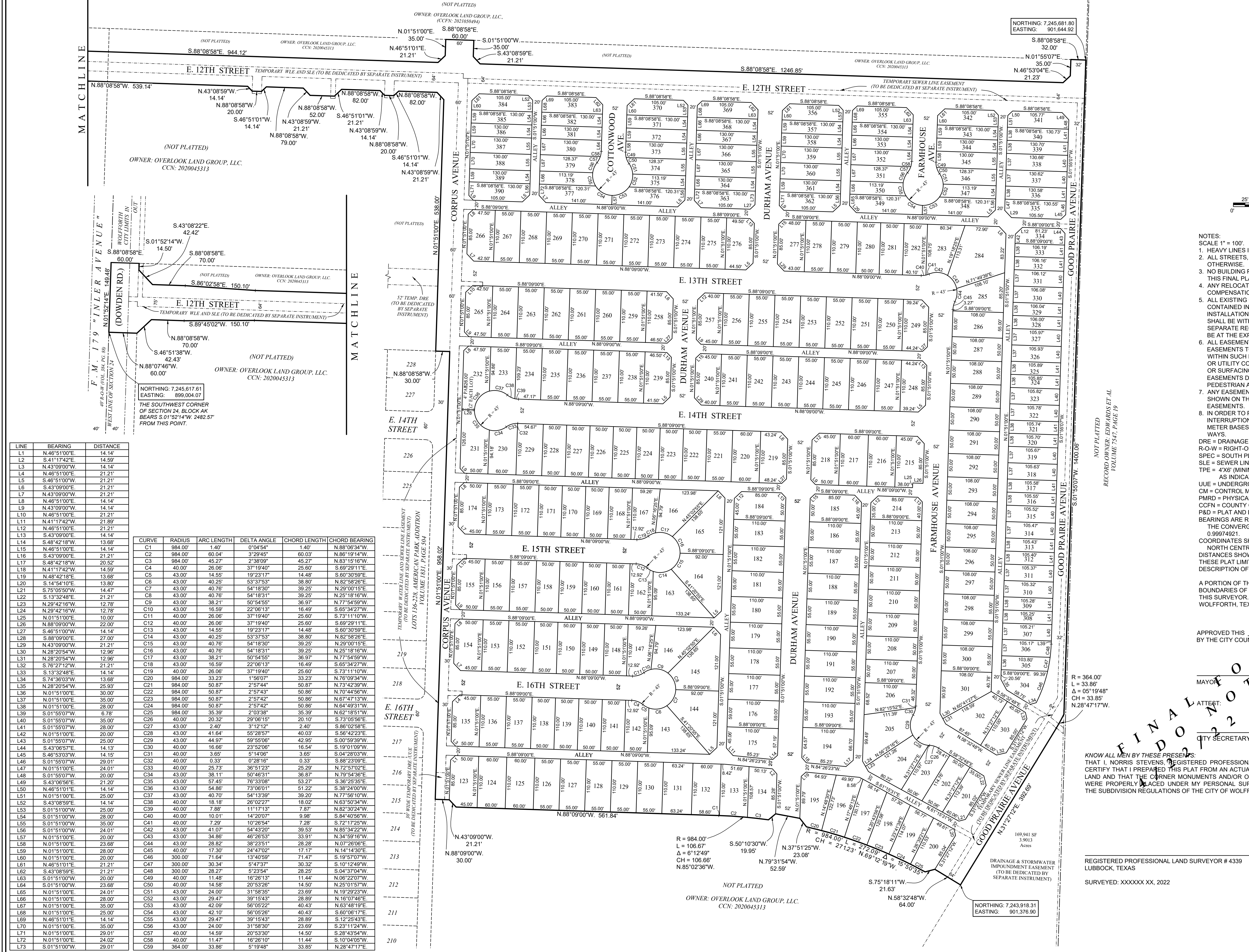
APPROVED THIS _____ DAY OF _____, 20____
BY THE CITY COUNCIL OF THE CITY OF WOLFORTH, TEXAS.

MAYOR _____
CITY SECRETARY _____

KNOW ALL MEN BY THESE PRESENTS THAT I, NORRIS STEVENS, REGISTERED PROFESSIONAL LAND SURVEYOR, DO HEREBY CERTIFY THAT I PREPARED THIS PLAT FROM AN ACTUAL AND ACCURATE SURVEY OF THE LAND AND THAT THE CORNER MONUMENTS AND/OR OTHER CONTROL SHOWN THEREON WERE PROPERLY PLACED UNDER MY PERSONAL SUPERVISION, IN ACCORDANCE WITH THE SUBDIVISION REGULATIONS OF THE CITY OF WOLFORTH, TEXAS.

REGISTERED PROFESSIONAL LAND SURVEYOR # 4339
LUBBOCK, TEXAS
SURVEYED: XXXXXX XX, 2022

AMD CIVIL ENGINEERING
LAND SURVEYING
AMD Engineering, LLC
6515 68th Street, Suite 300
Lubbock, TX 79424
Phone: 806-771-5976
Fax: 806-771-7925
TBPELS Reg. # 10178500
Accuracy - Efficiency - Integrity
PROPERTY OWNER: OVERLOOK LAND GROUP, LLC.
ADDRESS: P.O. BOX 53417, LUBBOCK, TEXAS 79453
PHONE: 806-761-7928
JOB NUMBER: 210569 © 2022 ALL RIGHTS RESERVED



LINE	BEARING	DISTANCE
L1	N 46°51'00"E	14.59'
L2	S 41°17'42"E	14.14'
L3	N 43°09'00"E	14.14'
L4	N 46°51'00"E	21.21'
L5	S 46°51'00"W	21.21'
L6	S 43°09'00"E	21.21'
L7	N 43°09'00"W	21.21'
L8	N 46°51'00"E	14.14'
L9	N 43°09'00"W	14.14'
L10	N 46°51'00"E	21.21'
L11	N 41°17'42"W	21.89'
L12	N 46°51'00"E	21.21'
L13	S 43°09'00"E	14.14'
L14	S 48°42'18"W	13.88'
L15	N 46°51'00"E	14.14'
L16	S 43°09'00"E	21.21'
L17	S 48°42'18"W	20.52'
L18	N 41°17'42"W	14.59'
L19	N 48°42'18"E	13.88'
L20	S 14°54'10"E	13.80'
L21	S 75°05'50"W	14.47'
L22	S 13°32'48"E	21.21'
L23	N 29°42'16"W	12.78'
L24	N 29°42'16"W	12.78'
L25	N 01°51'00"E	10.00'
L26	N 88°09'00"W	22.00'
L27	S 88°09'00"E	22.00'
L28	S 88°09'00"E	22.00'
L29	N 43°09'00"W	21.21'
L30	N 28°20'54"W	12.96'
L31	N 28°20'54"W	12.96'
L32	S 76°27'12"W	21.21'
L33	S 13°22'48"E	14.14'
L34	S 74°36'03"W	13.88'
L35	N 28°20'54"W	25.93'
L36	N 01°51'00"E	30.00'
L37	N 01°51'00"E	35.00'
L38	N 01°51'00"E	28.00'
L39	S 01°50'07"W	6.78'
L40	S 01°50'07"W	35.00'
L41	S 01°50'07"W	28.00'
L42	N 01°51'00"E	20.00'
L43	S 01°50'07"W	25.00'
L44	S 43°06'57"E	14.13'
L45	S 46°51'00"W	14.15'
L46	S 01°50'07"W	29.01'
L47	N 01°51'00"E	24.01'
L48	S 01°50'07"W	20.00'
L49	S 43°06'56"E	21.20'
L50	N 46°51'00"E	14.14'
L51	N 01°51'00"E	25.00'
L52	S 43°08'59"E	14.14'
L53	S 01°51'00"W	25.00'
L54	S 01°51'00"W	28.00'
L55	S 01°51'00"W	35.00'
L56	S 01°51'00"W	24.01'
L57	N 01°51'00"E	20.00'
L58	N 01°51'00"E	23.88'
L59	N 01°51'00"E	28.00'
L60	N 01°51'00"E	20.00'
L61	N 46°51'00"E	21.21'
L62	S 43°08'59"E	21.21'
L63	S 01°51'00"W	20.00'
L64	S 01°51'00"W	23.88'
L65	N 01°51'00"E	24.01'
L66	N 01°51'00"E	28.00'
L67	N 01°51'00"E	35.00'
L68	N 01°51'00"E	25.00'
L69	N 46°51'00"E	14.14'
L70	N 01°51'00"E	35.00'
L71	N 01°51'00"E	29.01'
L72	N 01°51'00"E	24.02'
L73	S 01°51'00"W	29.01'

CURVE	RADIUS	ARC LENGTH	DELTA ANGLE	CHORD LENGTH	CHORD BEARING
C1	984.00'	1.40'	0°04'54"	1.40'	N 88°06'34"W
C2	984.00'	60.04'	3°29'45"	60.03'	N 86°19'14"W
C3	984.00'	45.27'	2°38'09"	45.20'	N 83°15'16"W
C4	40.00'	26.06'	37°19'40"	25.67'	S 69°29'11"E
C5	40.00'	14.55'	19°23'17"	14.48'	S 60°30'59"E
C6	43.00'	40.25'	53°37'53"	38.20'	N 82°58'26"E
C7	43.00'	40.76'	54°18'30"	39.85'	N 29°00'15"E
C8	43.00'	40.76'	54°18'31"	39.25'	N 25°18'16"W
C9	43.00'	38.21'	50°54'55"	36.97'	N 77°54'59"W
C10	43.00'	16.59'	22°06'13"	16.49'	S 65°34'27"W
C11	40.00'	26.06'	37°19'40"	25.67'	S 73°11'10"W
C12	40.00'	26.06'	37°19'40"	25.67'	S 69°29'11"E
C13	43.00'	14.55'	19°23'17"	14.48'	S 60°30'59"E
C14	43.00'	40.25'	53°37'53"	38.80'	N 82°58'26"E
C15	43.00'	40.76'	54°18'30"	39.25'	N 29°00'15"E
C16	43.00'	40.76'	54°18'31"	39.25'	N 25°18'16"W
C17	43.00'	38.21'	50°54'55"	36.97'	N 77°54'59"W
C18	43.00'	16.59'	22°06'13"	16.49'	S 65°34'27"W
C19	40.00'	26.06'	37°19'40"	25.67'	S 73°11'10"W
C20	984.00'	33.23'	1°56'07"	33.23'	N 76°09'34"W
C21	984.00'	50.87'	2°57'44"	50.87'	N 73°42'39"W
C22	984.00'	50.87'	2°57'43"	50.86'	N 70°44'56"W
C23	984.00'	50.87'	2°57'42"	50.86'	N 67°47'13"W
C24	984.00'	50.87'	2°57'42"	50.86'	N 64°49'31"W
C25	984.00'	35.39'	2°03'38"	35.39'	N 62°18'51"W
C26	40.00'	20.32'	29°06'15"	20.10'	S 73°05'56"E
C27	43.00'	2.40'	3°12'12"	2.40'	S 86°02'58"E
C28	43.00'	41.64'	55°28'57"	40.03'	S 56°42'23"E
C29	43.00'	44.97'	59°55'06"	42.95'	S 00°59'39"W
C30	40.00'	16.86'	23°52'08"	16.54'	S 19°01'09"W
C31	40.00'	3.85'	5°14'06"	3.85'	S 04°28'03"W
C32	40.00'	0.33'	0°28'16"	0.33'	S 88°23'09"E
C33	40.00'	25.73'	36°51'23"	25.29'	N 72°57'02"E
C34	43.00'	38.11'	50°46'31"	36.87'	N 79°54'36"E
C35	43.00'	57.45'	76°33'08"	53.27'	S 36°25'35"E
C36	43.00'	54.86'	73°05'11"	51.22'	S 38°24'00"W
C37	43.00'	40.70'	54°13'39"	39.20'	N 77°56'10"W
C38	43.00'	18.18'	26°02'27"	18.02'	N 63°50'34"W
C39	40.00'	7.88'	11°17'13"	7.87'	N 82°30'24"W
C40	40.00'	10.01'	14°20'07"	9.98'	S 84°40'56"W
C41	40.00'	7.29'	10°26'54"	7.28'	S 72°17'25"W
C42	43.00'	41.07'	54°43'20"	39.53'	N 85°34'22"W
C43	43.00'	34.86'	46°26'31"	33.91'	N 34°59'16"W
C44	43.00'	28.82'	38°23'51"	28.28'	N 07°26'06"E
C45	40.00'	17.30'	24°47'02"	17.17'	N 14°14'30"W
C46	300.00'	71.64'	13°40'59"	71.47'	S 19°57'07"W
C47	300.00'	30.34'	5°47'37"	30.32'	S 10°12'49"W
C48	300.00'	28.27'	5°23'54"	28.25'	S 04°37'04"W
C49	40.00'	11.48'	16°26'13"	11.44'	N 06°22'07"W
C50	40.00'	14.58'	20°53'28"	14.50'	N 25°01'57"W
C51	43.00'	24.00'	31°58'35"	23.69'	N 19°29'23"W
C52	43.00'	29.47'	39°15'43"	28.89'	N 16°07'46"E
C53	43.00'	42.09'	56°05'22"	40.43'	N 63°48'19"E
C54	43.00'	42.10'	56°05'26"	40.43'	S 60°06'17"E
C55	43.00'	29.47'	39°15'43"	28.89'	S 12°25'43"E
C56	43.00'	24.00'	31°58'30"	23.69'	S 23°11'24"W
C57	40.00'	14.59'	20°53'30"	14.50'	S 28°43'54"W
C58	40.00'	11.47'	16°26'10"	11.44'	S 10°04'05"W
C59	364.00'	33.86'	5°19'48"	33.85'	N 28°47'17"E



NORTHING: 7,245,681.80
EASTING: 901,644.92

NORTHING: 7,243,918.31
EASTING: 901,376.90