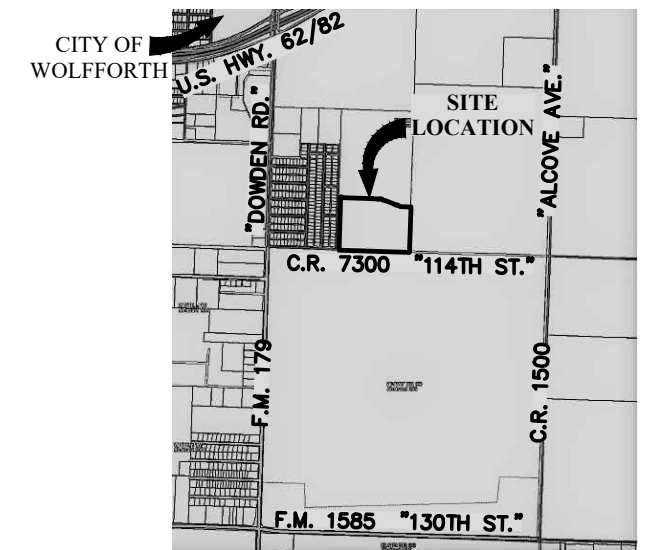
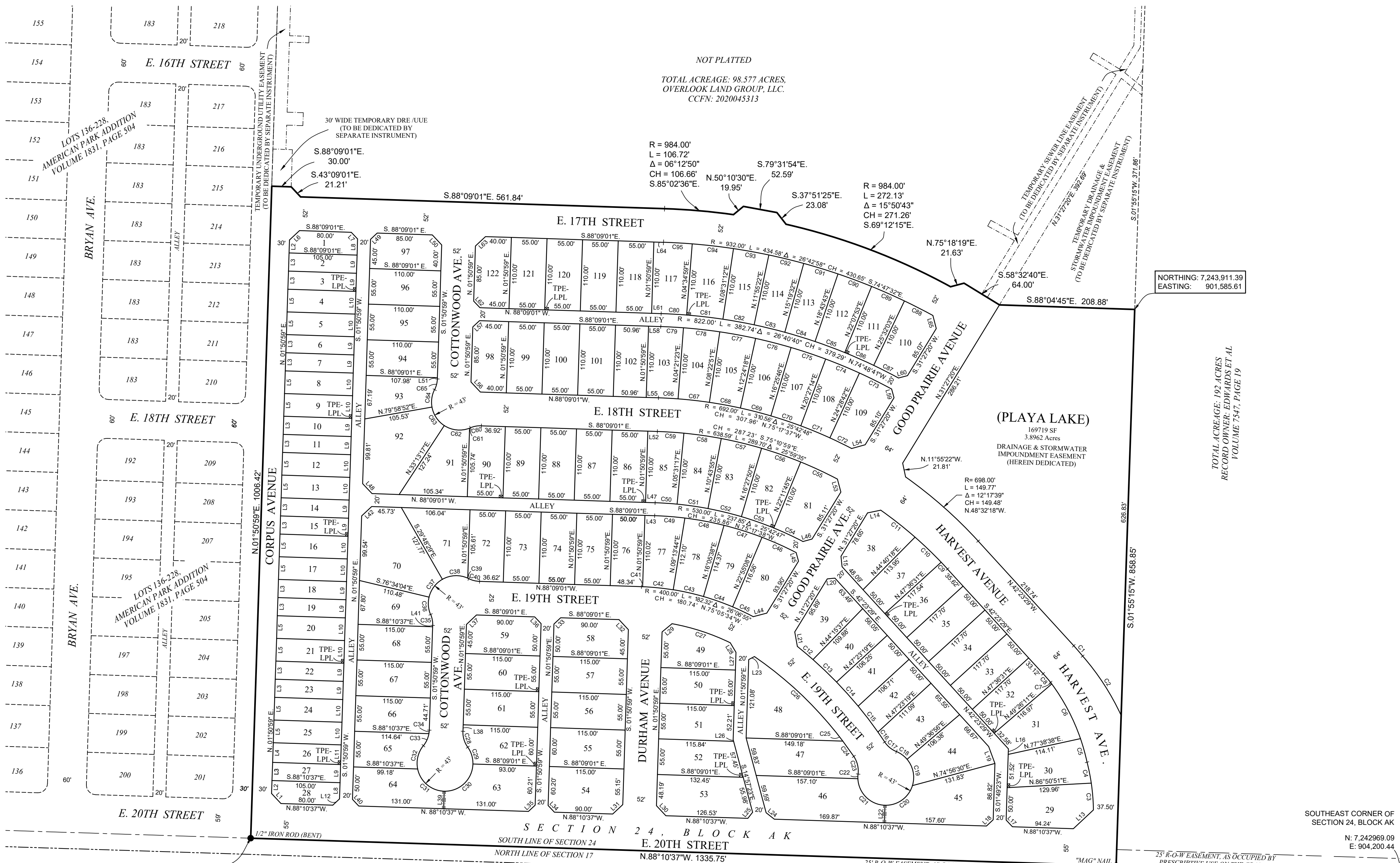


# THE OVERLOOK, LOTS 1 THROUGH 122, AN ADDITION TO THE CITY OF WOLFFORTH, LUBBOCK COUNTY, TEXAS



VICINITY MAP  
NOT TO SCALE

LINE	BEARING	DISTANCE
L1	N.43°09'49"W.	21.21'
L2	N.01°50'59"E.	20.00'
L3	N.01°50'59"E.	28.00'
L4	N.01°50'59"E.	30.40'
L5	N.01°50'59"E.	35.00'
L6	N.46°50'59"E.	21.21'
L7	S.43°09'01"E.	14.14'
L8	S.01°50'59"W.	25.00'
L9	S.01°50'59"W.	28.00'
L10	S.01°50'59"W.	35.00'
L11	S.01°50'59"W.	30.35'
L12	S.46°53'20"W.	14.15'
L13	S.46°53'20"W.	42.48'
L14	N.77°58'11"E.	20.65'
L15	N.05°28'04"W.	15.99'
L16	N.01°49'23"E.	8.43'
L17	N.43°10'37"W.	14.14'
L18	S.46°49'23"W.	14.14'
L19	S.20°17'03"E.	27.79'
L20	N.84°31'56"E.	12.01'
L21	N.09°56'53"W.	22.50'
L22	N.01°49'23"E.	27.00'
L23	N.62°00'16"E.	9.95'
L24	N.51°34'00"W.	16.05'
L25	S.38°26'00"W.	11.93'
L26	S.14°57'23"E.	2.91'
L27	S.01°50'59"W.	27.29'
L28	S.30°40'38"E.	16.86'
L29	N.50°27'37"E.	19.84'
L30	N.43°09'49"W.	21.21'
L31	S.46°50'11"W.	21.22'
L32	S.43°09'01"E.	21.21'
L33	N.46°50'59"E.	14.14'
L34	N.43°09'49"W.	14.14'
L35	S.46°50'11"W.	14.15'
L36	S.43°09'01"E.	14.14'
L37	N.46°50'59"E.	21.21'
L38	N.01°50'59"E.	9.95'
L39	N.01°50'59"E.	27.00'
L40	N.43°09'49"W.	14.14'
L41	S.01°50'59"W.	21.21'
L42	N.46°50'59"E.	21.21'
L43	S.88°09'01"E.	15.07'
L44	S.75°14'51"W.	21.66'
L45	S.15°17'11"E.	13.71'
L46	S.74°46'46"W.	14.55'
L47	N.88°09'01"W.	14.76'
L48	N.43°09'01"W.	21.21'
L49	N.46°50'59"E.	14.14'
L50	S.43°09'01"E.	21.21'
L51	S.01°50'59"W.	1.85'
L52	S.88°09'01"E.	14.76'
L53	S.15°02'40"E.	20.65'
L54	S.74°49'11"W.	21.81'
L55	N.88°09'01"W.	18.88'
L56	N.43°09'01"W.	21.21'
L57	N.46°50'59"E.	14.14'
L58	S.88°09'01"E.	18.88'
L59	S.14°51'59"E.	13.81'
L60	S.75°09'57"W.	14.46'
L61	N.88°09'01"W.	14.84'
L62	N.43°09'01"W.	14.14'
L63	N.46°50'59"E.	21.21'
L64	S.88°09'01"E.	14.84'
L65	S.14°45'32"E.	20.76'



NORTHING: 7,243,095.72  
EASTING: 900,222.10  
THE SOUTHWEST CORNER OF SECTION 24, BLOCK AK BEARS N.88°10'37"W. 1300.01' FROM THIS POINT.

NORTHING: 7,243,911.39  
EASTING: 901,585.61

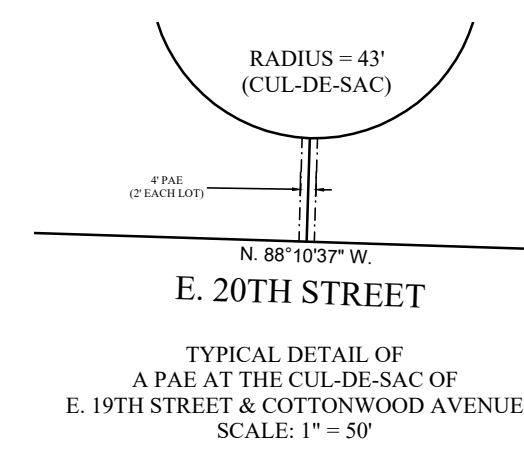
SOUTHEAST CORNER OF SECTION 24, BLOCK AK  
N. 7,242,969.09  
E. 904,200.44

SECTION 24, BLOCK AK  
TOTAL ACRES: 98.577 ACRES  
OVERLOOK LAND GROUP, LLC.  
CCFN: 2020045313

CURVE	RADIUS	ARC LENGTH	DELTA ANGLE	CHORD LENGTH	CHORD BEARING
C1	382.00'	21.05'	3°09'28"	21.05'	N.40°48'45"W.
C2	384.54'	109.46'	16°18'32"	109.09'	N.32°57'21"W.
C3	312.50'	41.86'	7°37'14"	41.53'	S.04°36'24"E.
C4	312.50'	37.78'	6°10'56"	37.78'	S.15°35'31"E.
C5	315.00'	95.58'	17°23'09"	95.22'	S.27°43'16"E.
C6	315.00'	3.11'	0°33'58"	3.11'	S.36°41'50"E.
C7	318.00'	17.53'	3°09'28"	17.52'	S.40°48'45"E.
C8	634.00'	14.38'	1°17'58"	14.38'	S.43°02'28"E.
C9	634.00'	3.23'	0°11'30"	3.23'	S.42°32'14"E.
C10	634.00'	55.98'	5°03'33"	55.98'	S.46°13'13"E.
C11	634.00'	73.15'	6°36'38"	73.11'	S.45°59'18"E.
C12	634.00'	67.37'	6°05'19"	67.34'	S.51°47'39"E.
C13	641.87'	31.61'	2°49'18"	31.61'	N.49°58'52"W.
C14	641.87'	50.17'	4°28'41"	50.15'	N.46°19'52"W.
C15	641.87'	50.02'	4°27'53"	50.00'	N.41°51'35"W.
C16	641.87'	50.22'	4°28'59"	50.21'	N.37°23'10"W.
C17	40.00'	23.80'	34°05'41"	23.45'	N.50°32'08"W.
C19	43.00'	44.70'	59°33'22"	42.71'	N.12°29'26"W.
C20	43.00'	55.94'	74°32'09"	52.08'	N.54°33'19"E.
C21	43.00'	64.09'	85°24'06"	58.32'	S.45°28'34"E.
C22	43.00'	7.19'	9°34'28"	7.18'	S.02°00'43"W.
C23	40.00'	28.65'	41°01'55"	28.04'	S.13°43'00"E.
C24	589.87'	29.11'	2°49'38"	29.10'	S.35°38'46"E.
C25	589.87'	16.36'	1°35'22"	16.36'	S.37°51'16"E.
C26	589.87'	173.23'	16°49'36"	172.61'	S.47°03'45"E.
C27	348.00'	95.16'	15°40'00"	94.86'	S.71°51'40"E.
C28	40.00'	26.06'	37°19'40"	25.60'	N.16°48'51"W.
C29	43.00'	27.76'	36°59'32"	27.28'	N.16°58'55"W.
C30	43.00'	67.80'	90°20'07"	60.99'	N.46°40'55"E.
C31	43.00'	57.43'	76°31'44"	53.26'	S.49°53'09"E.
C32	43.00'	38.12'	50°47'55"	36.89'	S.13°46'41"W.
C33	40.00'	20.70'	29°39'27"	20.47'	S.24°20'55"W.
C34	40.00'	5.35'	7°40'13"	5.35'	S.05°41'05"W.
C35	40.00'	17.30'	24°47'02"	17.17'	N.10°13'32"W.

CURVE	RADIUS	ARC LENGTH	DELTA ANGLE	CHORD LENGTH	CHORD BEARING
C36	43.00'	27.29'	36°21'59"	26.84'	S.04°45'04"E.
C37	43.00'	35.09'	46°45'35"	34.13'	S.36°48'43"W.
C38	43.00'	40.60'	54°05'52"	39.11'	S.87°14'27"W.
C39	43.00'	1.76'	2°20'37"	1.76'	N.64°32'18"W.
C40	40.00'	17.30'	24°47'02"	17.17'	N.75°45'30"W.
C41	90201.84'	1.66'	0°00'04"	1.66'	N.84°14'51"W.
C42	400.54'	47.46'	6°47'18"	47.43'	N.84°10'03"W.
C43	400.00'	47.93'	6°51'55"	47.90'	N.77°20'19"W.
C44	400.00'	47.65'	6°49'30"	47.62'	N.70°29'37"W.
C45	400.00'	35.23'	5°02'45"	35.22'	N.64°33'29"W.
C46	510.00'	57.83'	6°29'48"	57.80'	S.65°50'19"E.
C47	510.00'	61.44'	6°54'09"	61.40'	S.72°32'17"E.
C48	510.00'	61.54'	6°54'48"	61.50'	S.79°26'46"E.
C49	510.00'	64.71'	5°14'51"	64.69'	S.85°31'36"E.
C50	530.00'	33.96'	3°40'18"	33.96'	N.86°18'52"W.
C51	530.00'	48.20'	5°12'38"	48.18'	N.81°52'24"W.
C52	530.00'	53.02'	5°43'55"	53.00'	N.76°24'07"W.
C53	530.00'	53.02'	5°43'55"	53.00'	N.70°40'12"W.
C54	530.00'	49.64'	5°22'00"	49.63'	N.65°07'15"W.
C55	640.00'	62.42'	5°35'19"	62.40'	S.65°00'36"E.
C56	640.00'	64.03'	5°43'55"	64.00'	S.70°40'12"E.
C57	640.00'	64.03'	5°43'55"	64.00'	S.76°24'07"E.
C58	640.00'	58.20'	5°12'38"	58.18'	S.81°52'24"E.
C59	640.00'	41.02'	3°40'19"	41.01'	S.86°18'52"E.
C60	40.00'	17.30'	24°47'02"	17.17'	N.79°27'28"E.
C61	43.00'	1.43'	1°54'19"	1.43'	N.68°10'07"E.
C62	43.00'	40.71'	54°15'00"	39.21'	S.83°54'13"E.
C63	43.00'	35.09'	46°45'35"	34.13'	S.33°23'56"E.
C64	43.00'	27.51'	36°39'09"	27.04'	S.08°18'26"W.
C65	40.00'	17.30'	24°47'02"	17.17'	S.14°14'30"W.

CURVE	RADIUS	ARC LENGTH	DELTA ANGLE	CHORD LENGTH	CHORD BEARING
C66	692.00'	30.27'	2°30'24"	30.27'	N.86°53'49"W.
C67	692.00'	48.61'	4°01'28"	48.60'	N.83°37'53"W.
C68	692.00'	48.61'	4°01'28"	48.60'	N.79°36'26"W.
C69	692.00'	48.61'	4°01'28"	48.60'	N.75°34'58"W.
C70	692.00'	48.61'	4°01'28"	48.60'	N.71°33'30"W.
C71	692.00'	48.61'	4°01'28"	48.60'	N.67°32'02"W.
C72	692.00'	37.26'	3°05'05"	37.25'	N.63°58'45"W.
C73	802.00'	55.65'	3°58'33"	55.64'	S.63°32'01"E.
C74	802.00'	56.33'	4°01'28"	56.32'	S.67°32'02"E.
C75	802.00'	56.33'	4°01'28"	56.32'	S.71°33'30"E.
C76	802.00'	56.33'	4°01'28"	56.32'	S.75°34'58"E.
C77	802.00'	56.33'	4°01'28"	56.32'	S.79°36'26"E.
C78	802.00'	56.33'	4°01'28"	56.32'	S.83°37'53"E.
C79	802.00'	35.09'	2°30'24"	35.08'	S.86°53'49"E.
C80	822.00'	39.22'	2°44'00"	39.21'	N.86°47'01"W.
C81	822.00'	56.48'	3°56'13"	56.47'	N.83°26'55"W.
C82	822.00'	48.82'	3°24'10"	48.81'	N.79°46'43"W.
C83	822.00'	48.82'	3°24'10"	48.81'	N.76°22'33"W.
C84	822.00'	48.82'	3°24'10"	48.81'	N.72°58'22"W.
C85	822.00'	48.82'	3°24'10"	48.81'	N.69°34'12"W.
C86	822.00'	48.82'	3°24'10"	48.81'	N.66°10'02"W.
C87	822.00'	42.94'	2°59'36"	42.94'	N.62°58'09"E.
C88	932.00'	49.31'	3°01'53"	49.31'	S.62°57'00"E.
C89	932.00'	55.35'	3°24'10"	55.34'	S.66°10'02"E.
C90	932.00'	55.35'	3°24'10"	55.34'	S.69°34'12"E.
C91	932.00'	55.35'	3°24'10"	55.34'	S.72°58'22"E.
C92	932.00'	55.35'	3°24'10"	55.34'	S.76°22'33"E.
C93	932.00'	55.35'	3°24'10"	55.34'	S.79°46'43"E.
C94	932.00'	64.04'	3°56'13"	64.03'	S.83°26'55"E.
C95	932.00'	44.46'	2°44'00"	44.46'	S.86°47'01"E.



KNOW ALL MEN BY THESE PRESENTS: THAT I, NORRIS STEVENS, A REGISTERED PROFESSIONAL LAND SURVEYOR, DO HEREBY CERTIFY THAT I PREPARED THIS PLAT FROM AN ACTUAL AND ACCURATE SURVEY OF THE LAND AND THAT THE CORNER MONUMENTS AND/OR OTHER CONTROL SHOWN THEREON WERE PROPERLY PLACED UNDER MY PERSONAL SUPERVISION, IN ACCORDANCE WITH THE SUBDIVISION REGULATIONS OF THE CITY OF WOLFFORTH, TEXAS.

APPROVED THIS DAY OF \_\_\_\_\_, 20\_\_\_\_  
BY THE CITY COUNCIL OF THE CITY OF WOLFFORTH, TEXAS.  
  
MAYOR \_\_\_\_\_  
CITY SECRETARY \_\_\_\_\_  
ATTEST:  
NOT FOR RECORD  
8/11/20

REGISTERED PROFESSIONAL LAND SURVEYOR #4339  
LUBBOCK, TEXAS  
SURVEYED: XXXXXX XX, 2021

**AMD**  
CIVIL ENGINEERING  
LAND SURVEYING  
AMD Engineering, LLC  
6515 58th Street, Suite 300  
Lubbock, TX 79424  
Phone: 806-771-5976  
Fax: 806-771-7925  
TBPELS Reg. # 10178500  
Accuracy - Efficiency - Integrity  
PROPERTY OWNER: OVERLOOK LAND GROUP, LLC.  
ADDRESS: P.O. BOX 53417, LUBBOCK, TEXAS 79453  
PHONE: 806-761-7928  
JOB NUMBER: 20397  
CAD/ELS  
© 2021 ALL RIGHTS RESERVED